

Clean Run Exercise of the Month

Shark Bait

The idea and name for these exercises is based on an exercise designed by Bud Houston in 1995. I have modified the obstacles used as well as the setup.

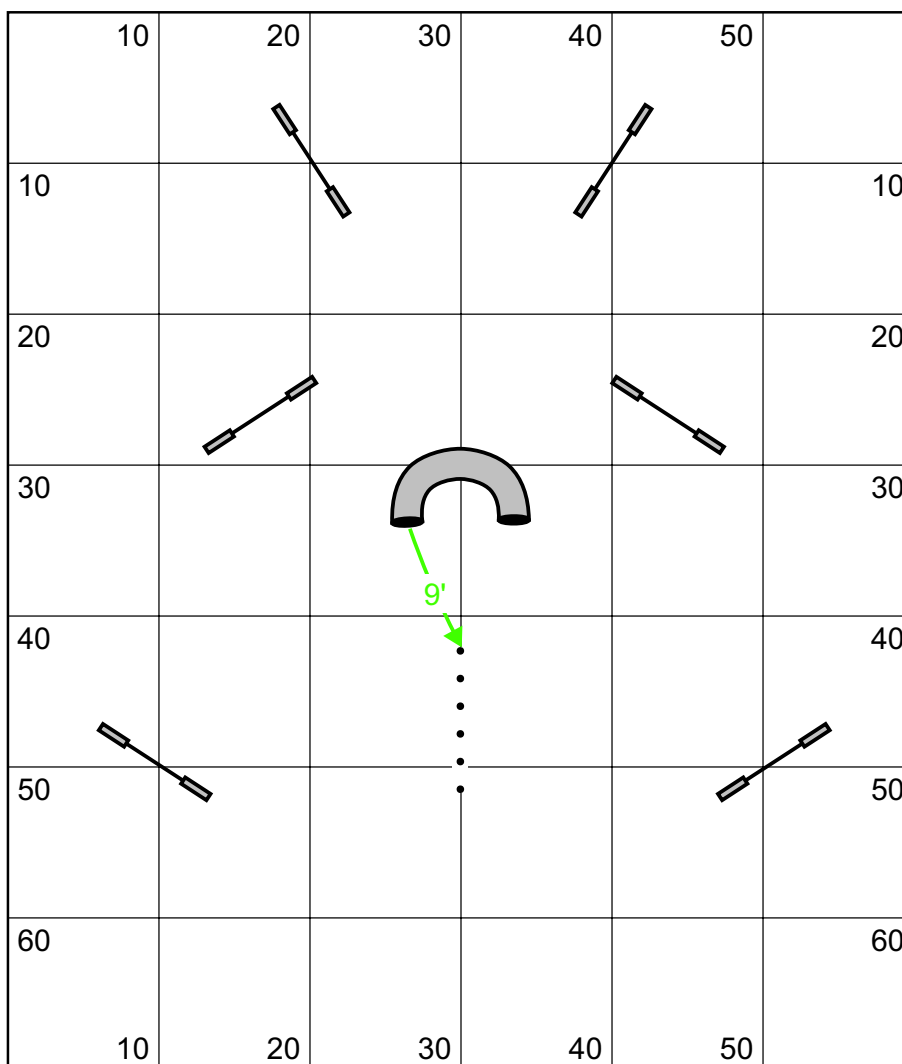
The goal is to test weave pole performance. Notice that the end of the weave poles is only 9 feet from either tunnel entrance. Can your dog ignore the allure of the tunnel and complete his job in the poles?

If your dog just can't help himself and cuts out of the poles or actually takes the tunnel, don't get mad. Just bring him back and give it another try. If he's still sucked out of the poles by the tunnel, simplify the challenge so

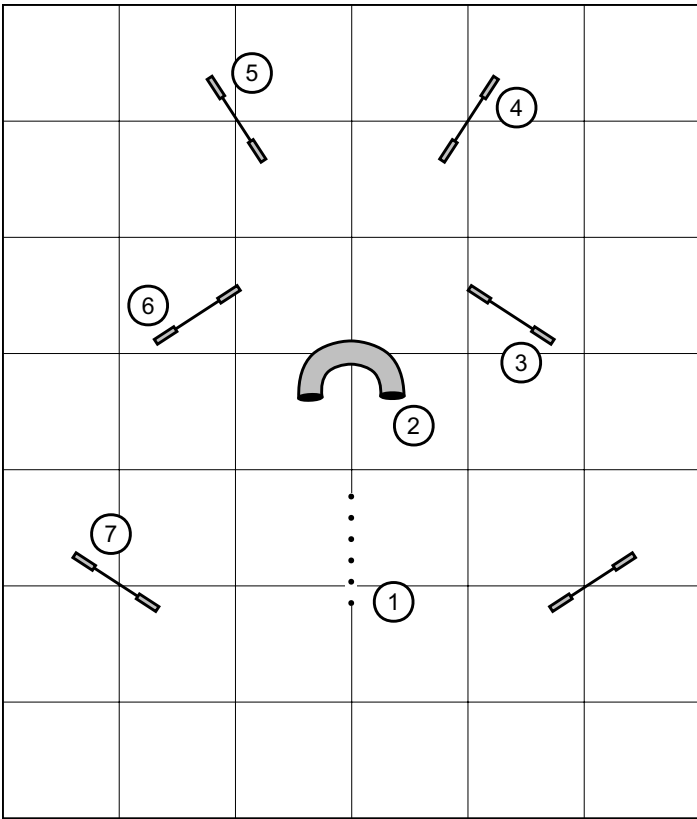
that he's successful. For example, you can put wires on some or all of the poles. You can move the poles farther away from the tunnel to a point where the dog can be successful completing the poles and then gradually decrease the distance between the poles and the tunnel. Alternatively, you can flip over the tunnel openings to the ground so that the dog cannot enter the tunnel.

Remember, it's your job not only to teach your dog how to weave, but to teach him that the obstacle isn't finished until he's passed the last pole. Be as patient as necessary!

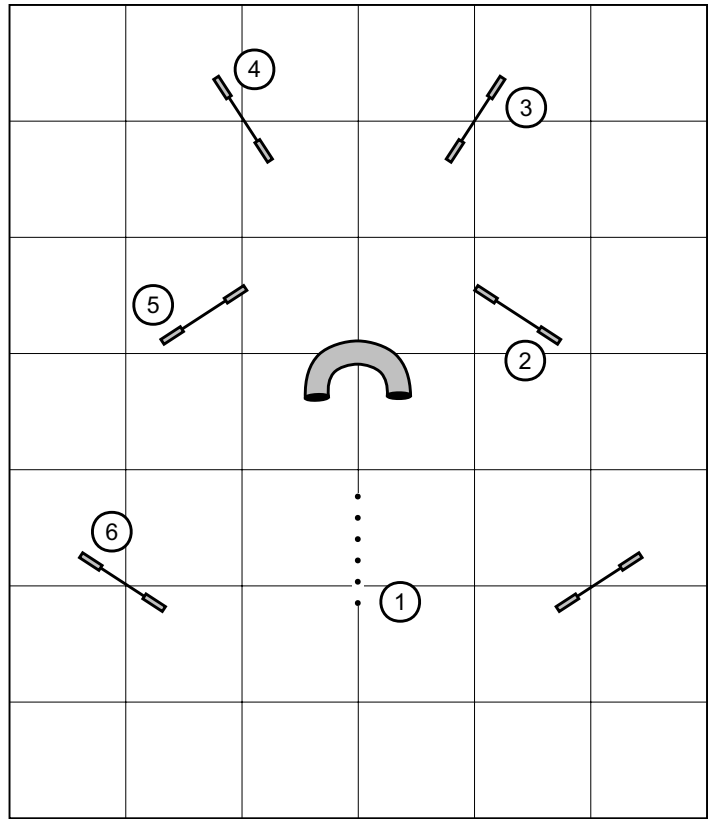
By Monica Percival



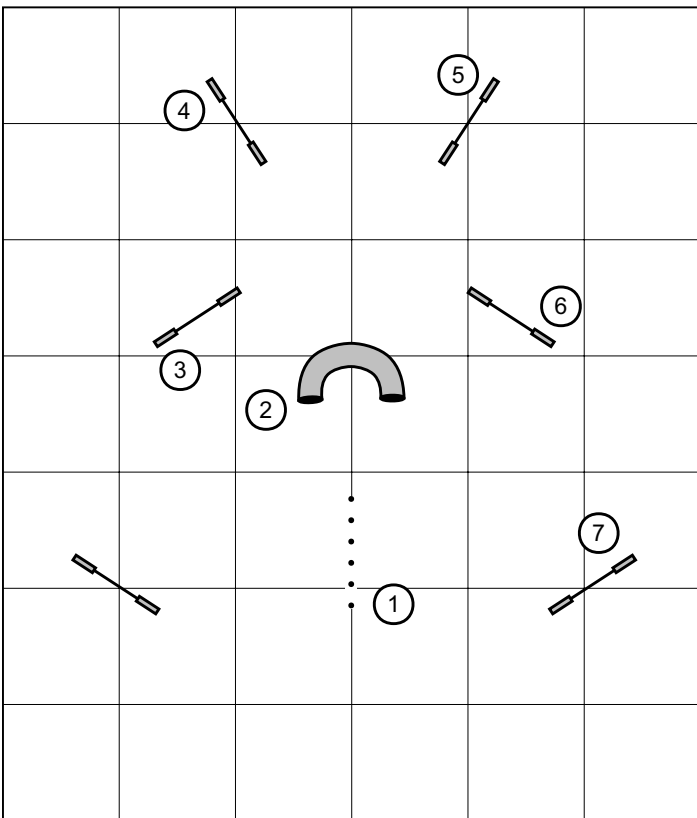
The Setup



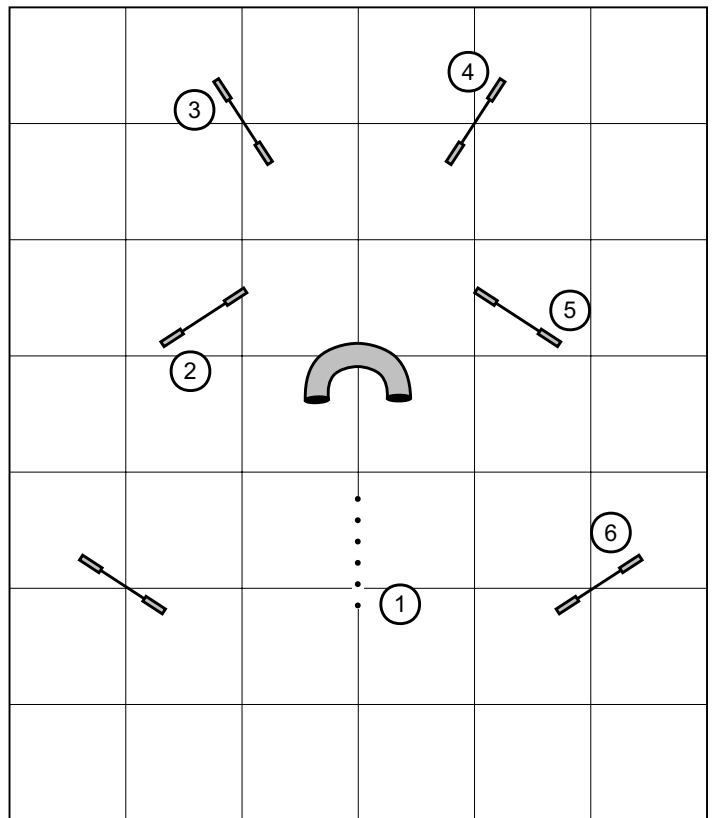
Exercise 1



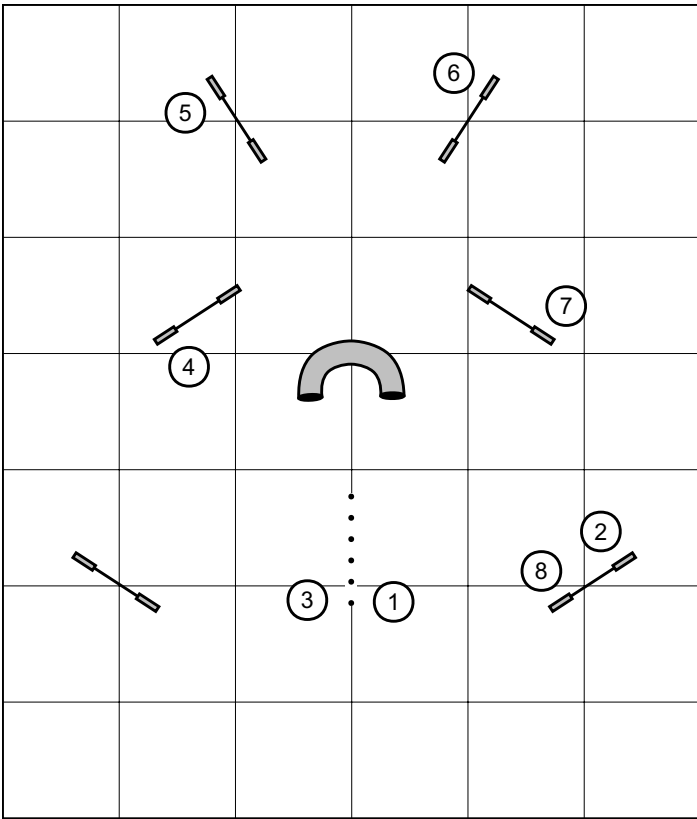
Exercise 2



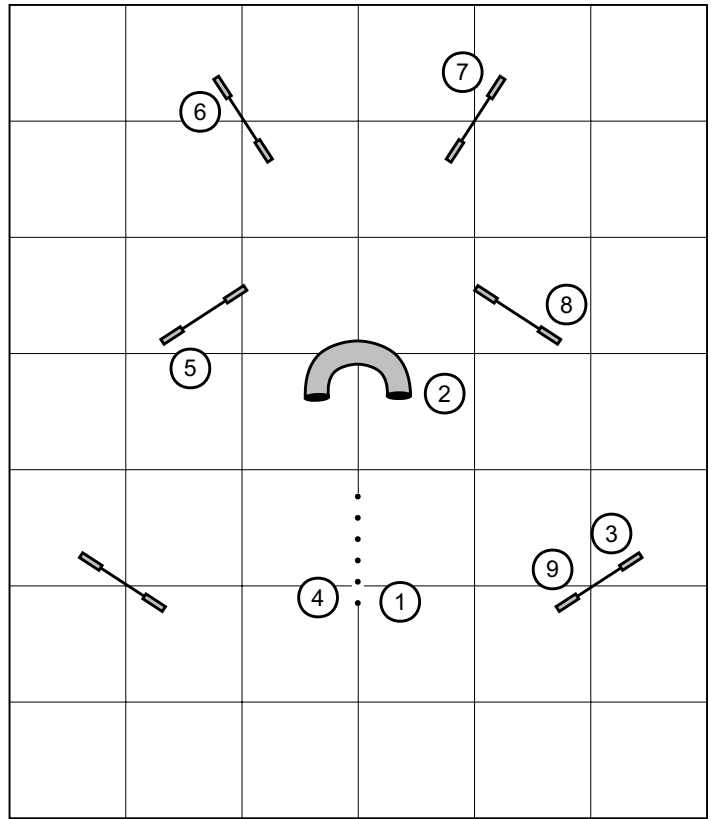
Exercise 3



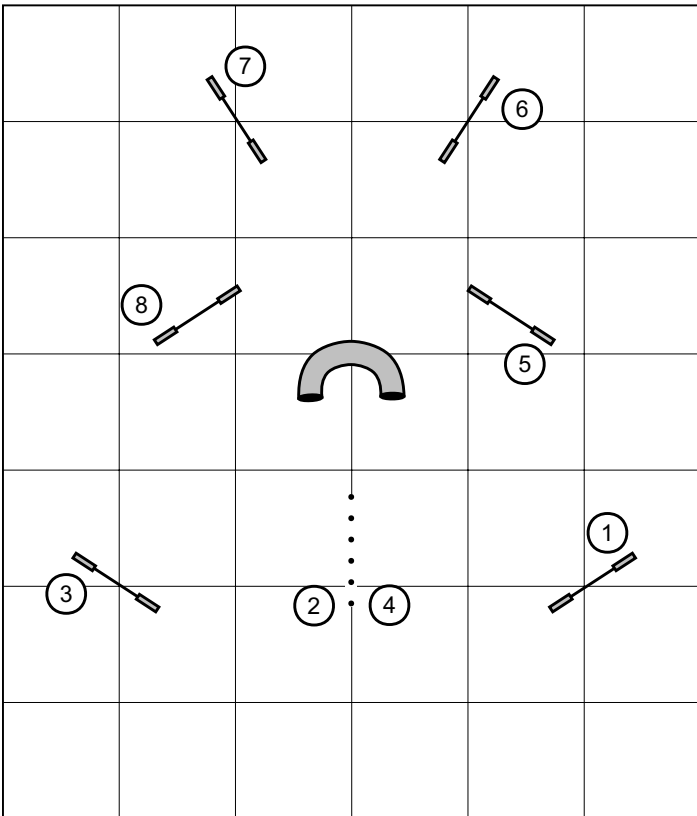
Exercise 4



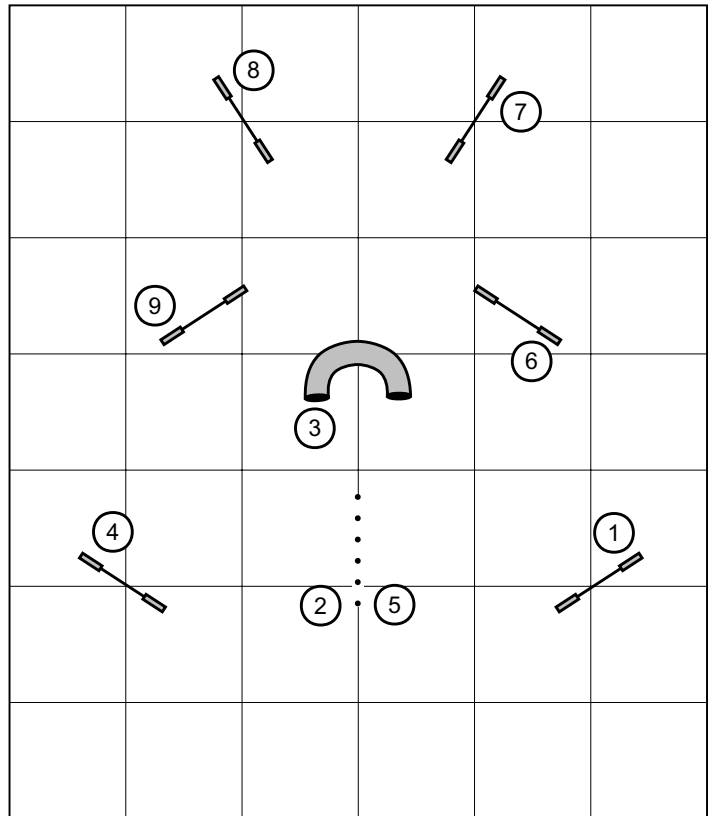
Exercise 5



Exercise 6



Exercise 7



Exercise 8

Advanced Setups

When your dog is ready for more of a challenge, instead of starting the exercises at the weave poles, add a jump in front of the poles so the dog has more momentum going into the challenge. The repeat the exercises.

You can also decrease the distance from the last pole to the tunnel entrances. Can you do it with only 5 or 6 feet between the end of the poles and the tunnel openings?

