

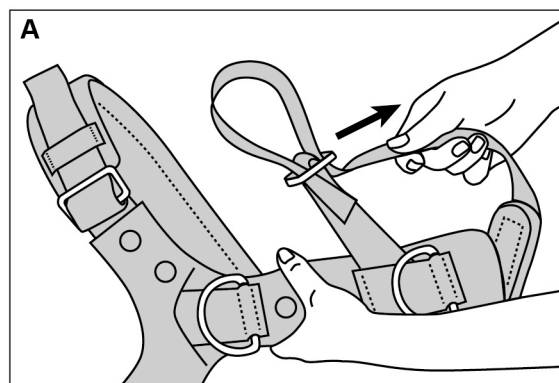
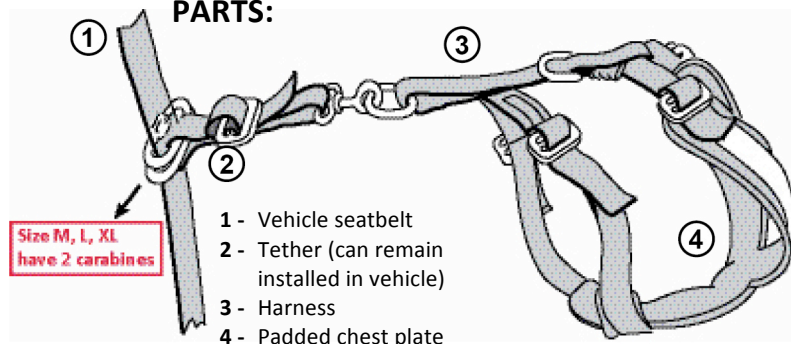
INSTRUCTIONS

Product name	ALLSAFE
Product type	Dog safety harness
Item No.	15380100; 15380000; 15380200; 15380300
Attachment	For attachment to vehicle seatbelts only
Use	Securing dogs in automobiles
Transport position	Rear seats only
Version and features	Sizes S to XL
Safety notice	See text

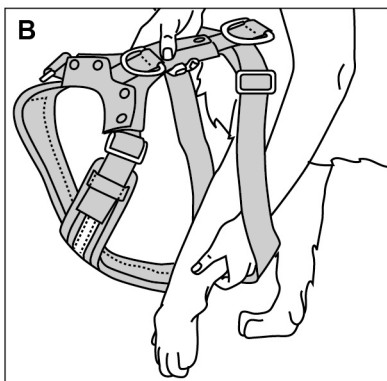
kleinmetall GmbH
Hainstrasse 52
D-63526 Erlensee
Germany
Phone +49 6183-91120-0
Fax +49 6183-72152
info@kleinmetall.de
www.kleinmetall.de

- ! Please read these instructions carefully and retain them for future reference.
- ! Ensure your dog is properly secured before operating your vehicle.

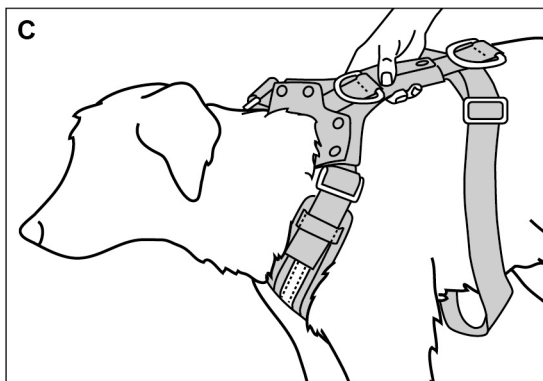
PARTS:



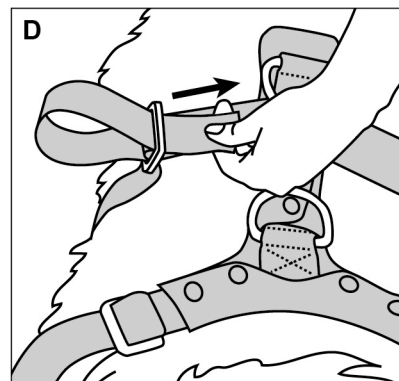
A: Loosen and extend the left and right rear side straps.



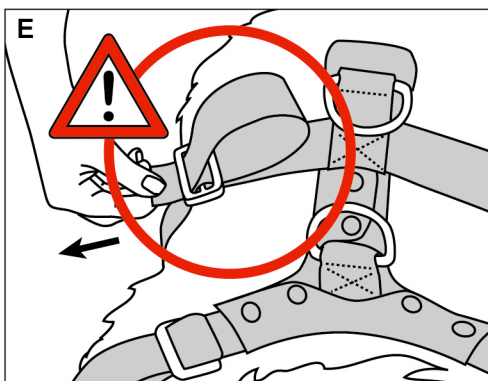
B: Insert the front legs.



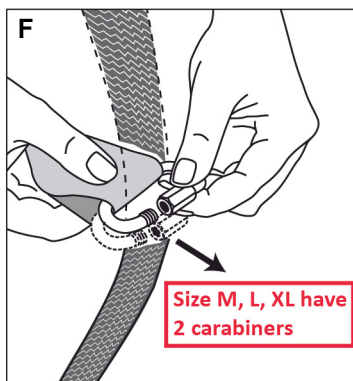
C: Slip the safety harness over the head.



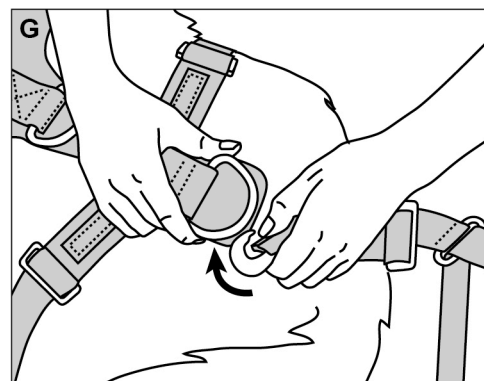
D: Adjust the rear side straps so that the fit is snug and comfortable.



E: Always pass the ends of the straps through the buckle one more time for added security.



F: Open the screw lock and slide the seatbelt into the carabiner. Then screw the lock closed. The tether can remain installed in the vehicle.



G: For safety reasons, hook the swivel eye bolt snap of the tether only to the rear metal ring of the harness.



An ISO 9001 certified company

Continued on next page

INSTRUCTIONS

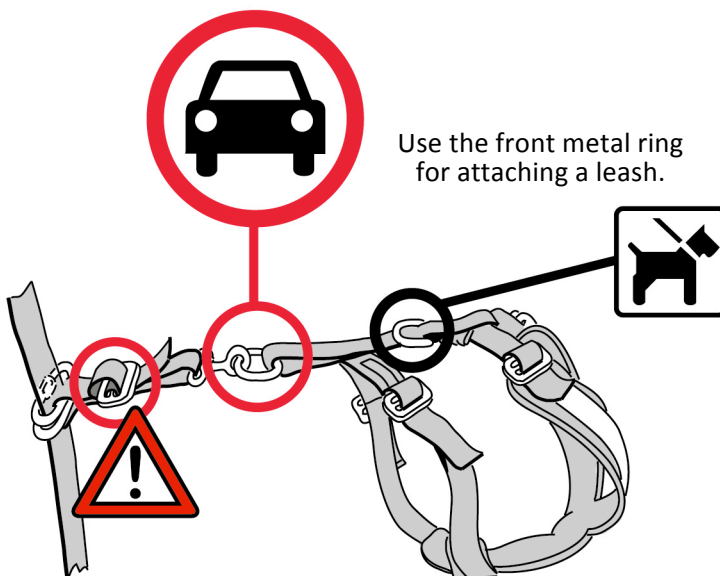
Item No.	Size	Weight
15380100	S	15 oz (410g)
15380000	M	24 oz (670g)
15380200	L	26 oz (740g)
15380300	XL	27 oz (770g)

kleinmetall GmbH
Hainstrasse 52
D-63526 Erlensee
Germany
Phone +49 6183-91120-0
Fax +49 6183-72152
info@kleinmetall.de
www.kleinmetall.de

WARNING

WARNING:

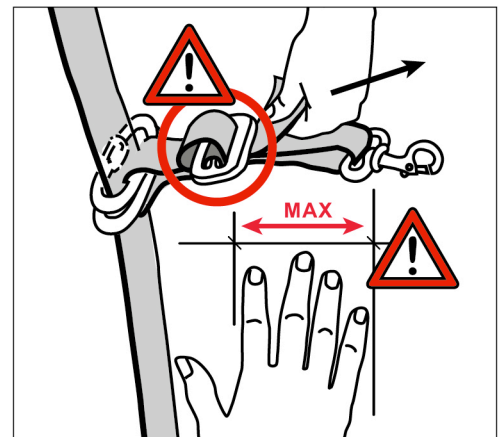
Attach the tether only to the
rear metal ring of the harness!



SAFETY NOTICE:

WARNING: Always pass the ends of the straps through the buckle one more time for added security (see Figure E).

The tether strap should be no longer than the width of your hand.



Proper handling:

Loosen the straps and carefully fit the safety harness onto your dog. Adjust the harness so that it is snug, but not too tight. **Always pass the ends of the straps through the buckle one more time for added security.**

Make sure the vehicle seatbelt is fastened and then use the locking carabiner to attach the tether to it.

When transporting your dog in the vehicle, always make sure to hook the swivel eye bolt snap of the tether to the **rear metal ring** of the harness. Simply unhook the snap to remove your dog.

The front metal ring can be used to attach a leash.

Safety notice:

Always transport your dog on the back seat of the vehicle – preferably behind the (unoccupied) front passenger seat.

Care and cleaning:

Remove any accumulated dirt and hair, and use neutral soapy water to occasionally wash the fittings, chest plate and harness.

Important notice:

Regularly inspect your ALLSAFE dog safety harness for wear, tears and damage, and replace the entire safety harness as necessary.